

The disadvantage of the advantage tourney

BY ED VAN DE GEVEL

The famous Dutch soccer player Johan Crujff once said: "Ieder voordeel heb ze nadeel", which translates into "Every advantage has its disadvantage". I always thought this could be the theme of a wonderful endgame study, but my own tries never resulted in something really beautiful. Consequently, with my 60th birthday coming up on 17/12/2020, I decided to organise a theme tourney.

Tourney director: Harold van der Heijden

Judge: Ed van de Gevel

Send your original studies to the address of tournament director: heijdenharold@gmail.com in PGN format, but please supply an explanation of the advantage and disadvantage shown.

Closing date: 16/12/2020

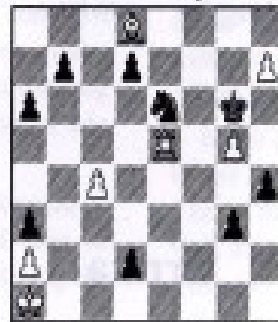
Prizes: €250, €125 and €75

Theme: the disadvantage of the advantage. During the solution Black plays a surprising move which gives an advantage that seems decisive for Black but where that Black move itself leads to a considerable disadvantage. The advantage and disadvantage should not be purely material. As the example shows the 'surprising' Black move may be a move that sets up a well-known theme.

Example:

Ed van de Gevel

EBUR 1993, correction by Mario Garcia



a1g6 0113.47 7/9 Draw

1.Rd5 g2/l 2.Bb6/l1 Sd4/l11 3.h8S+ Kh5 4.g6+ Kh6 5.Sf7+ Kxg6 6.Sh8+ Kh6 7.Rd6+ Kh7 8.Rxd7+ Kg8 9.Rd8+ Kh7 10.Rd7+ draws.

i) Kxh7 2.g6+ Kxg6 3.Bxh4 g2 4.Bf2 draws.

ii) 2.h8S+? Kh7 3.Bb6 h3 4.Bg1 Sxg5 5.Sf7 Sf3 6.Rxd2 Sxd2 7.Sg5+ Kg6 8.Sxh3 Kf5 9.c5 Kg4 10.Sf2+ Kf3 11.Sd3 Ke2 12.Sf4+ Kf1 13.Sh3 Sf3 14.Be3 Ke2 15.Bc1 g1Q 16.Sxg1+ Sxg1 17.Bxa3 Kd3 wins.

iii) Kxh7 3.Rxd2 h3 4.Rxd7+ Kg6 5.Bg1 Sxg5 6.Rd3 draws. The thematic move 2...Sd4 sets up a Novotny interference with the usual advantage that White cannot defend against both threats (d1Q mate and g1Q mate).

The thematic move 2...Sd4 has the disadvantage that if White could take this piece with check the black threats are neutralized. As a result the bK cannot go to the 4th rank or the a1-h8 diagonal and thus is not able to escape perpetual check.