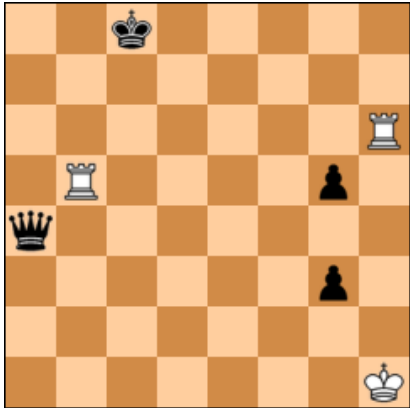


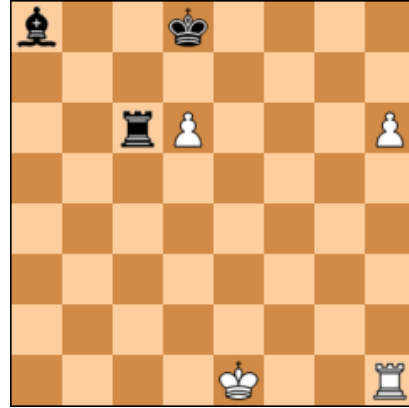
ESTUDIOS DE ANATOLY SKRIPNIK

2.comm Lenin 140 MT-2010



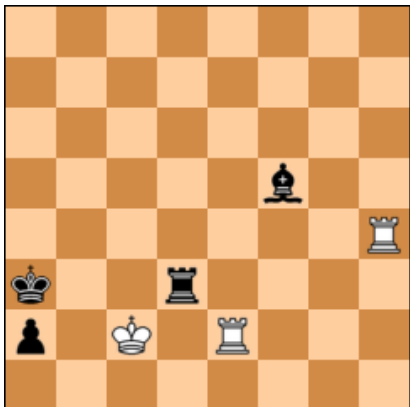
Tablas

Sp.p Loshinski & Umnov 100-2012



Ganan

M. Liburkin-100 MT-2014



Tablas

Soluciones

1) 2.comm Lenin 140 MT-2010

1.Th8+ [1.Tbb6? De4+ 2.Rg1 De1+ 3.Rg2 Df2+ 4.Rh3 Dh2+ 5.Rg4 g2-+ -+] **1...Rc7 2.Tbb8! De4+ 3.Rg1 De1+ 4.Rg2 Df2+ 5.Rh3 Dh2+ 6.Rg4 Dxb8** [6...g2 7.Thc8+ Rd7 8.Td8+ Re7 9.Te8+ =] **7.Txb8 g2 8.Rh3! g1D 9.Tc8+ Rd6 10.Td8+ Re7 11.Te8+ Rxe8** stalemate

2) Sp.p Loshinski & Umnov 100-2012

1.0-0! [1.Th4? Rd7 2.h7 Tc8 3.h8D Txb8 4.Txb8 Ad5 5.Th6 Ae6] **1...Txd6 2.Tf8+ Re7 3.h7 Tg6+ 4.Rf2 Rxf8 5.h8D+ Tg8 6.Df6+ Re8 7.Re3 Tf8 8.De6+ Rd8 9.Rd4 Te8 10.Dd6+ Rc8 11.Rc5 Te1** [11...Td8 12.De6+ Td7 (12...Rc7 13.De7+ Td7 14.De5+ Rc8 15.Rb6 Tb7+ 16.Ra6 Tb8 17.Ra7) 13.Rb6+-] **12.Df8+-**

3) Mark Liburkin-100 MT-2014

1.Ta4+ 0. [0. 1.Te5 ? 0. 1...a1C+ 2.Rc1 Cb3+ 3.Rc2 Td2+ 4.Rc3 Tc2#] **1...Rxa4 2.Rb2 Ta3** [2...Td1 3.Rxa2 Ab1+ 4.Rb2 =] **3.Ra1 Ab1 4.Tb2 ! 4...Ra5 5.Tb3** [5.Tb7 ? 5...Ad3 6.Ta7+ Aa6 -+] **5...Ta4** [5...Txb3 stalemate=] **6.Tb2 Ra6 7.Tb4 Ta5 8.Tb2 Ra7 9.Tb5 Ta6 10.Tb2 Ra8 11.Tb6 Ta7 12.Tb2 Ta6 13.Tb6 Txb6** stalemate =